

USING LAN INTERFACE

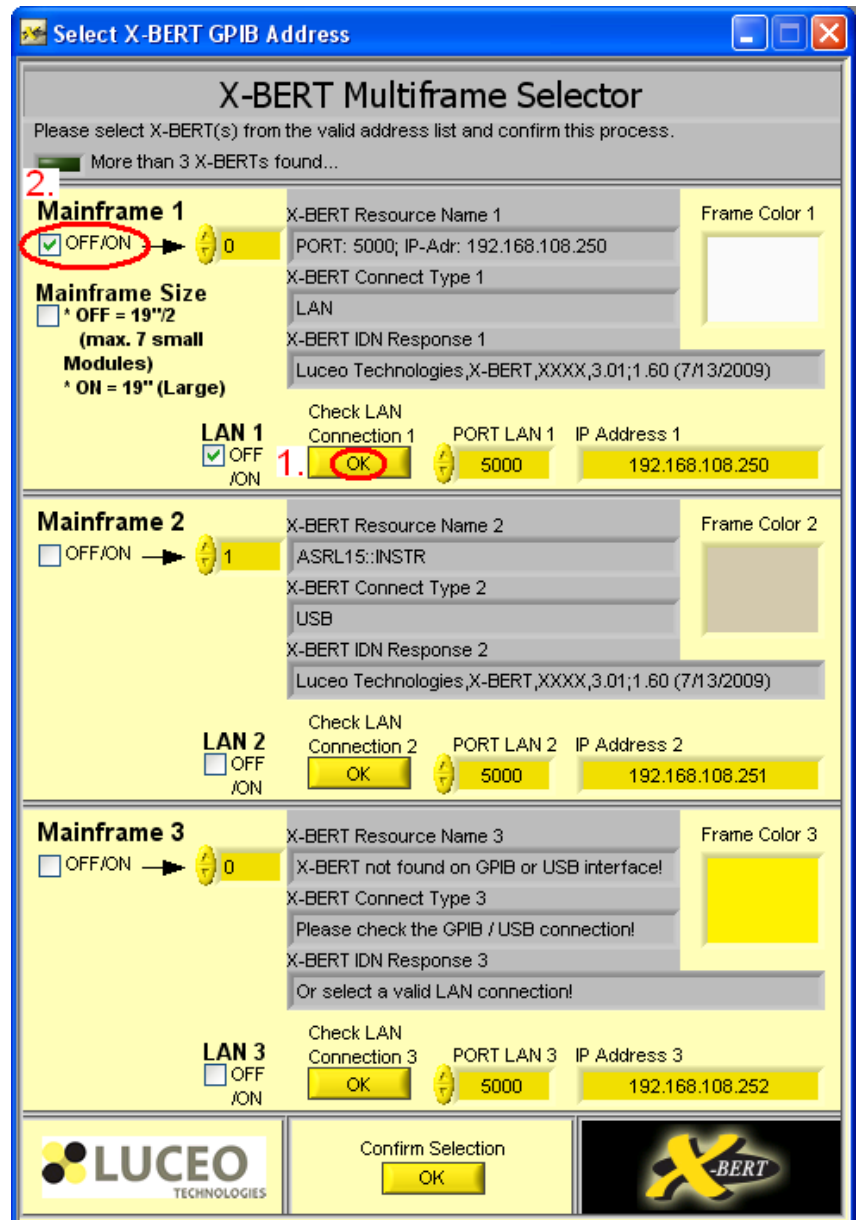
At startup the LUCEO X-BERT GUI scans the interfaces for connected X-BERT systems. As a nature of the protocols only USB and GPIB can be found automatically. For connecting to LAN the setup has to be done manually.

At first check the LAN connection. Provided the IP address¹ is correct and the port 5000 is unused, the relevant checkbox “LAN (1)” is to be checked.

¹ If you want change the LAN settings you can use the provided LAN-SERVER-TOOL.

It is also possible to change the network settings by using the command “*COMMON:LAN:SETIP x.x.x.x<LF>” to change the IP address, “*COMMON:LAN:SETSN x.x.x.x<LF>” to change the subnet mask and “*COMMON:LAN:SETGW x.x.x.x<LF>” to change the gateway address. If you want use this network settings you have to change to the CUSTOMER network settings by using the command “*COMMON:LAN:CONFIGSELECT CUSTOM<LF>”.

Secondly you can select the required Mainframe (2.).





USING LAN INTERFACE

APPLICATION NOTE 1008

Thirdly click the button labeled "confirm selection". The connection is established and the operational GUI is starting.

Select X-BERT GPIB Address

X-BERT Multiframe Selector

Please select X-BERT(s) from the valid address list and confirm this process.

More than 3 X-BERTs found...

2. OFF/ON → 0

Mainframe 1

X-BERT Resource Name 1: PORT: 5000; IP-Adr: 192.168.108.250

X-BERT Connect Type 1: LAN

X-BERT IDN Response 1: Luceo Technologies,X-BERT,XXXX,3.01;1.60 (7/13/2009)

Check LAN Connection 1: PORT LAN 1: IP Address 1

1. OFF/ON → 0 **OK** 5000 192.168.108.250

Mainframe 2

OFF/ON → 1

X-BERT Resource Name 2: ASRL15::INSTR

X-BERT Connect Type 2: USB

X-BERT IDN Response 2: Luceo Technologies,X-BERT,XXXX,3.01;1.60 (7/13/2009)

Check LAN Connection 2: PORT LAN 2: IP Address 2

OFF/ON → 1 **OK** 5000 192.168.108.251

Mainframe 3

OFF/ON → 0

X-BERT Resource Name 3: X-BERT not found on GPIB or USB interface!

X-BERT Connect Type 3: Please check the GPIB / USB connection!

X-BERT IDN Response 3: Or select a valid LAN connection!

Check LAN Connection 3: PORT LAN 3: IP Address 3

OFF/ON → 0 **OK** 5000 192.168.108.252

3. **OK**

LUCEO TECHNOLOGIES

Luceo Technologie GmbH
Am Borsigturm 13
13507 Berlin
Tel +49 30 814 512 40 00
Fax +49 30 814 512 40 20

Revision 1.0 09/2009

info@luceotec.com | www.luceotec.com





LUCEO TECHNOLOGIES GMBH

Located in Berlin, Germany, the company focuses on optoelectronic innovations in multiple fields. One of it is high – class test equipment.

Luceo’s members have decades of optoelectronic experiences, collected in professional fiber optic companies and institutes.

Product specifications and descriptions are subject to change without notice.

All rights reserved.

Luceo Technologies GmbH

Am Borsigturm 13

13507 Berlin

Germany

Phone +49 30 814 512 40 00

Fax +49 30 814 512 40 20

info@luceotec.com

www.luceotec.com

Exceeding the parameters described in this datasheet might lead to permanent damage. Precautions for ESD protection must be preserved at all times when operating and handling the instrument. Product specifications and descriptions in this document are subject to change without notice. For the latest version of this document, please visit our website.