

2 Channel VOA and PD Integrated Module

Features / Benefits

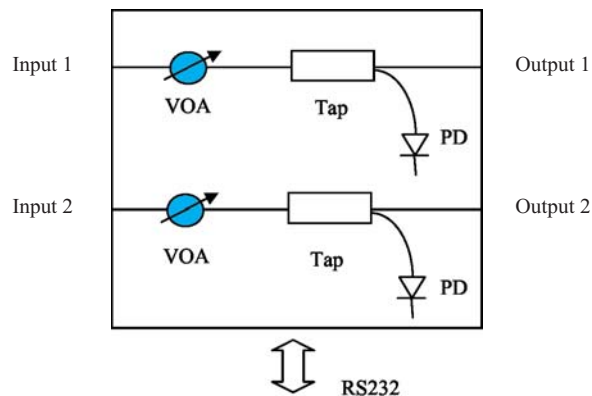
- Real time optical power adjustment
- Continuous tuning without moving parts
- High precise optical power control
- Low insertion loss
- Wide dynamic range
- RS232 interface
- Low cost

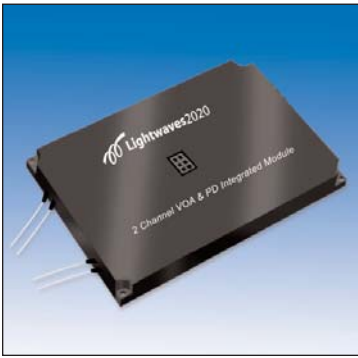
Applications

- Network optical power adjustment
- Channel balancing in WDM system
- EDFA gain-tile and power balancing
- Raman amplifier
- Multi-channel OADM



Functional Drawing



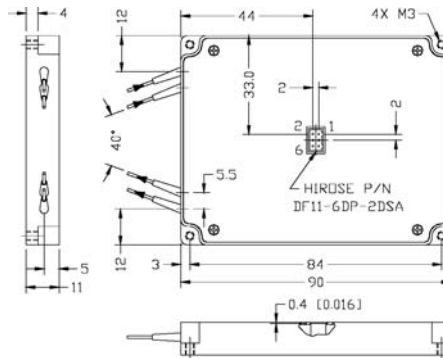


2 Channel VOA and PD Integrated Module

Absolute Maximum Ratings

Parameter	Unit	Min	Typ.	Max
Operating Wavelength Range	nm	1528	-	1562
Input Power Range	dBm	- 30	-	+ 10
Attenuation Range	dB	40	-	-
Insertion Loss (input to output)	dB	-	-	1.7
PDL @10dB attenuation	dB	-	-	0.3
Optical Return Loss	dB	45	-	-
Attenuation Rising Time	ms	-	-	5
Attenuation Falling Time	ms	-	-	60 (-5 ~ 23°C)
		-	-	15 (23 ~ 70°C)
Accuracy @1550nm & 23°C	dB	-	-	0.2
Power Supply Voltage	V	4.75	5.0	5.25
Power Consumption	W	-	-	1
Operating Case Temperature Range	°C	- 5	-	70
Storage Temperature Range	°C	- 40	-	85
Dimensions	mm	90 × 70 × 11		

Dimensions



Unit: mm

Ordering Information

L I O N S 0 0 0 0 B 2 0 0

Fiber Type

0 = 250µm bare fiber
1 = 900µm loose tube

Connector

0= None
1= FC/UPC
2= FC/APC
3= SC/UPC
4= SC/APC
5= LC/UPC
6= MU/UPC



1323 Great Mall Drive, Milpitas, CA 95035-8037
Tel.408.503.8888 Fax. 408.503.8988
www.lightwaves2020.com