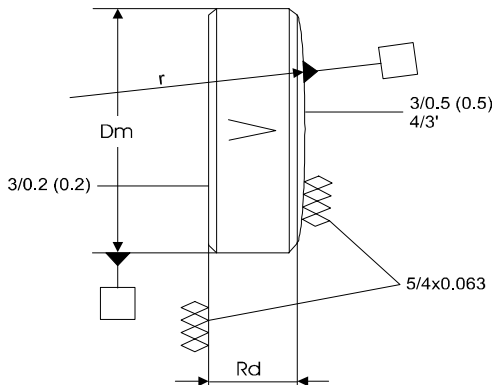


Std.-Saphirlinsen in Laserqualität Sapphire lenses in high grade laser quality

gültig ab April 2001 / valid from April 2001



Spezifikationen nach DIN 3140

3/0.5(0.5)- (Radius)
3/0.2(0.2)- (Planseite)
4/3'
5/3x0.063
Mat.: Verneul-Saphir, random
Maßtoleranzen: Dm: h8
Rd: ±0.1 mm
Schutzfacetten: 0.2 - 0.4 mm / 45°

MIL-Std. Spec.

λ/4-surface figure
s/d 20-10
tolerances: dia +0 -0.05
ET: ± 0.1 mm
chamfer 0.2 -0.4 mm / 45

Plankonkavlinsen / Plano concave lenses

Durchmesser (Dm) diameter	Randdicke (Rd) edge thickness	Radius (r) rcc	ca. FL bei 2940 app. FL at 2940	Typ.-Bezeichnung part no.	Preis in EURO Price in EURO
12.7 mm	2 mm	- 17.763 mm	- 25 mm	SPC-12.7/17.7SA	130,00 €
12.7 mm	2 mm	- 22.712 mm	- 32 mm	SPC-12.7/22.7SA	130,00 €
12.7 mm	2 mm	- 35.481 mm	- 50 mm	SPC-12.7/35.5SA	130,00 €
12.7 mm	2 mm	- 38.542 mm	-54 mm	SPC-12.7/38.5SA	130,00 €
12.7 mm	2 mm	- 49.939 mm	- 70 mm	SPC-12.7/50SA	120,00 €
12.7 mm	2 mm	- 71.050 mm	- 100 mm	SPC-12.7/71.0SA	120,00 €

Plankonvexlinsen / Plano convex lenses

Durchmesser (Dm) diameter	Randdicke (Rd) edge thickness	Radius (r) rcx	ca. FL bei 2940 app. FL at 2940	Typ.-Bezeichnung part no.	Preis in EURO Price in EURO
12.7 mm	2 mm	17.763 mm	25 mm	SPX-12.7/17.7SA	130,00 €
12.7 mm	2 mm	28.387 mm	40 mm	SPX-12.7/28.4SA	130,00 €
12.7 mm	2 mm	35.481 mm	50 mm	SPX-12.7/35.5SA	130,00 €
12.7 mm	2 mm	53.280 mm	75 mm	SPX-12.7/53.3SA	120,00 €
12.7 mm	2 mm	71.050 mm	100 mm	SPX-12.7/71.0SA	120,00 €
12.7 mm	2 mm	142.27 mm	200 mm	SPX-12.7/142SA	120,00 €
12.7 mm	2 mm	354.81 mm	500 mm	SPX-12.7/355SA	120,00 €
25.4 mm	2 mm	17.763 mm	25 mm	SPX-25.4/17.7SA	250,00 €
25.4 mm	2 mm	28.387 mm	40 mm	SPX-25.4/28.4SA	200,00 €
25.4 mm	2 mm	35.481 mm	50 mm	SPX-25.4/35.5SA	170,00 €
25.4 mm	2 mm	53.280 mm	75 mm	SPX-25.4/53.3SA	170,00 €
25.4 mm	2 mm	71.050 mm	100 mm	SPX-25.4/71.0SA	160,00 €
25.4 mm	2 mm	106.31 mm	150 mm	SPX-25.4/106SA	160,00 €
25.4 mm	2 mm	142.27 mm	200 mm	SPX-25.4/142SA	160,00 €
25.4 mm	2 mm	177.19 mm	250 mm	SPX-25.4/177SA	160,00 €
25.4 mm	2 mm	213.64 mm	300 mm	SPX-25.4/213SA	160,00 €
25.4 mm	2 mm	284.90 mm	400 mm	SPX-25.4/284SA	160,00 €
25.4 mm	2 mm	354.81 mm	500 mm	SPX-25.4/355SA	160,00 €
25.4 mm	2 mm	710.50 mm	1000 mm	SPX-25.4/710SA	160,00 €

Für weitere Nicht-Vorzugs-Typen erstellen wir Ihnen gerne ein Angebot. / Other sizes available on request.

Stand: April 2001, ersetzt Ausgabe vom Mai 1999 / Version 4 / HW / STDSAPHIR.XLS/Plankonkav-Linsen

A minimum order surcharge of 5,- € will be applied to all orders of less than 50,- €.

All prices are subject to change without notice

Delivery: ex works Olching

Prices: packing and insurance excluded

Terms of Payment: 30 days net

Wir akzeptieren / We accept

