



500-600nm OPTICAL ISOLATORS

www.isowave.com
64 Harding Avenue
Dover NJ 07801
Phone 973-328-7000
Fax 973-328-7036
sales@isowave.com

DESCRIPTION

ISOWAVE offers a wide variety of isolators for the 500-600nm wavelength band. Features to choose from include 2mm and 5mm clear apertures, fixed or tunable polarizers, broad band isolation without tuning and three power level options*. Single and Semi-Double (SD) stage versions provide different isolation level options. A Faraday rotator with no polarizers is also available.

*Low – Absorptive glass plate

*Medium – Glan Taylor Polarizer (no escape ports)

*High – Glan Taylor Polarizer with dual escape ports

FEATURES

- Wide Tuning Range
- Mounting Collar Included
 - High Isolation
 - Low Insertion Loss

MODEL NUMBER	Clear Aperture	Tunable	Broad-band	Isolation Minimum / Typical	Ins Loss Typical / Maximum	Transmission Minimum / Typical	Power Handling	Diameter	Length
	mm	Yes/No	Yes/No	dB	dB	%	W/cm2	inch / mm	inch/mm
I-56-2-FR	2	N	N	30 / 35	0.2	95	300	1.0 / 25.4	1.0 / 25.4
I-56-2L	2	N	N	38 / 40	3	50	10	1.0 / 25.4	2.40 / 61
I-56-2M	2	N	N	38 / 40	0.5 / 0.7	85 / 89	100	1.0 / 25.4	3.54 / 90
I-56-2H	2	N	N	38 / 40	0.5 / 0.7	85 / 89	250	1.0 / 25.4	4.13 / 105
I-5060C-2L	2	N	Y	35 / 38	3	50	10	1.0 / 25.4	2.40 / 61
I-5060C-2M	2	N	Y	35 / 38	0.5 / 0.7	85 / 89	100	1.0 / 25.4	3.54 / 90
I-5060C-2H	2	N	Y	35 / 38	0.5 / 0.7	85 / 89	250	1.0 / 25.4	4.13 / 105
I-56-5-FR	5	N	N	30 / 35	0.2	95	300	1.375 / 34.9	3.07 / 78
I-56T-5L	5	Y	N	38 / 40	3	50	10	1.375 / 34.9	4.12 / 105
I-56T-5M	5	Y	N	38 / 40	0.5 / 0.7	85 / 89	100	1.375 / 34.9	4.12 / 105
I-56T-5H	5	Y	N	38 / 40	0.5 / 0.7	85 / 89	250	1.375 / 34.9	5.01 / 127
I-5060C-L	5	Y	Y	38 / 40	3	50	10	1.375 / 34.9	4.12 / 105
I-5060C-M	5	Y	Y	38 / 40	0.6 / 0.75	84 / 86	100	1.375 / 34.9	4.12 / 105
I-5060C-H	5	Y	Y	38 / 40	0.6 / 0.75	84 / 86	250	1.375 / 34.9	5.01 / 127
I-56-SD-M	5	Y	N	55 / 60	1.0 / 1.5	70 / 79	100	1.375 / 34.9	4.12 / 105
I-56-SD-H	5	Y	N	55 / 60	1.0 / 1.5	70 / 79	250	1.375 / 34.9	5.01 / 127

Wavelength Options

*All isolators may be ordered centered anywhere between 500 and 600nm. Isowave will optimize on best effort basis using available lasers, or customer may supply laser for alignment and testing.

*C models are optimized at 532nm as standard and work over the entire 500-600nm wavelength range without tuning

*See page three for typical performance curves, or ask Sales for an isolation curve based on your preferred center wavelength

Part Number Options

FR = Faraday Rotator

L, M, H = Polarizer Power Level Options: Low, Medium, High

C = Broadband Isolation: 30dB over +/-50nm no tuning required

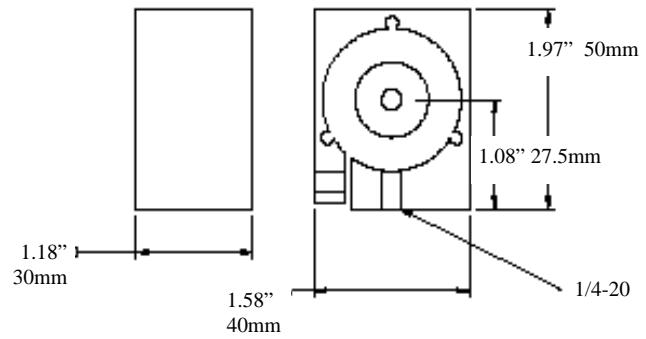
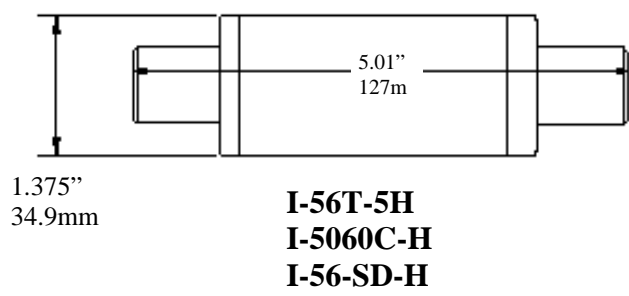
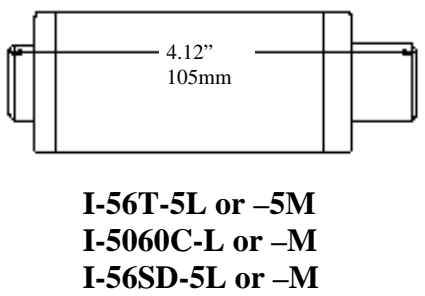
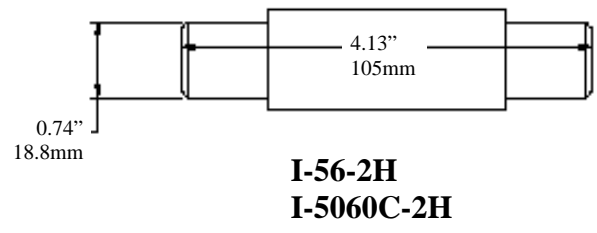
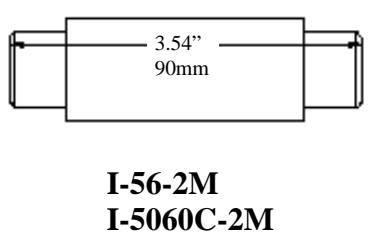
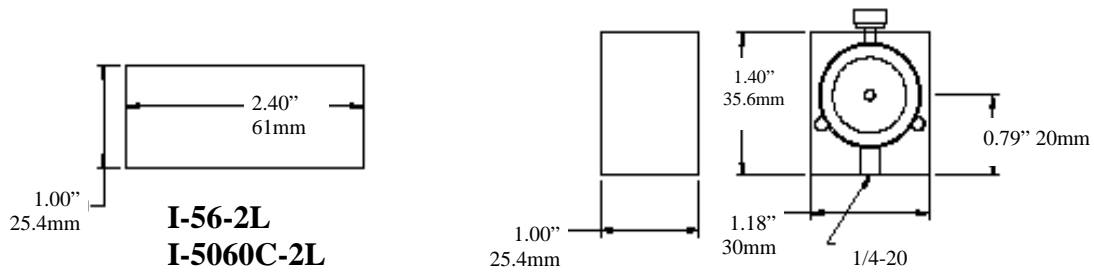
T = Tunable: Input polarizer may be rotated to maximize isolation

SD = Semi Double: Single center polarizer, two rotator isolator.

Specifications
subject to change
without notice

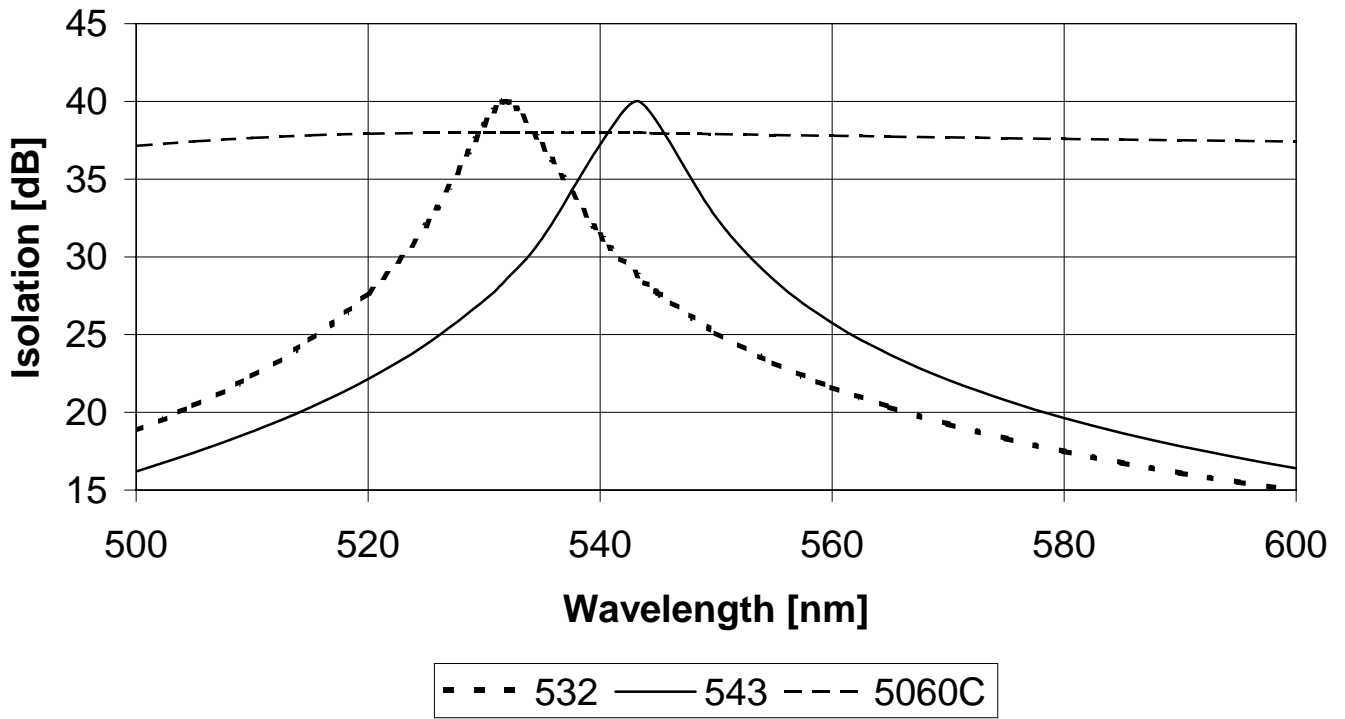
DS5060-R012010

500-600nm OPTICAL ISOLATORS OUTLINE DIMENSIONS

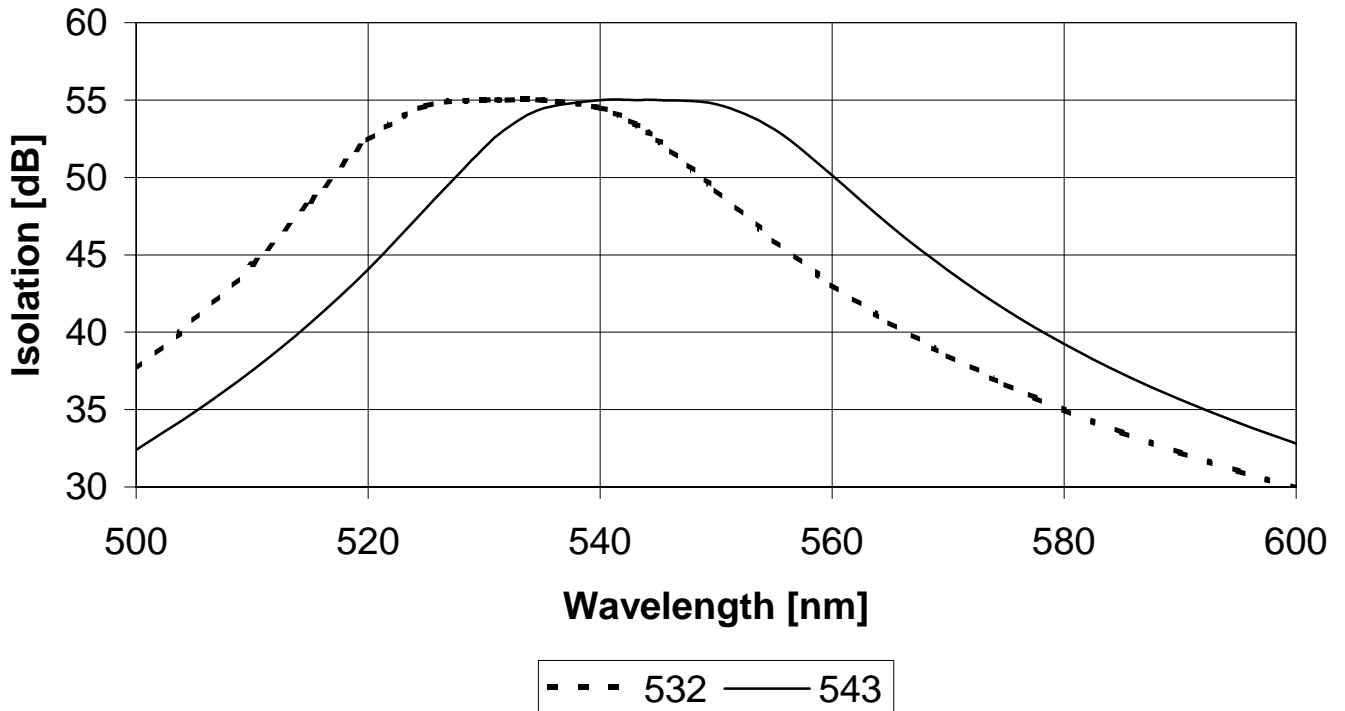


DS5060-R012010

500-600nm Single Stage



500-600 Semi-Double Isolators



DS5060-R022010