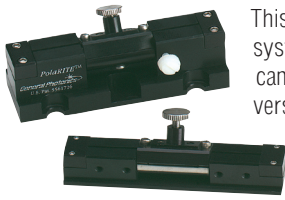


POLARIZATION MANAGEMENT MODULES

Drop-in Polarization Controller – PolaRITE™



This is the in-line version of the PolaRITE™ polarization controller. It can be inserted into a fiber optic system to control the polarization state of light without having to disconnect any part of the system. It can be used by simply inserting a length of fiber into the slot located on top of the device. The miniature version can be inserted in even tighter spaces in a fiber optic module.

Specifications:

Intrinsic Insertion Loss	< 0.05 dB
Return Loss	> 65 dB
Operating Wavelength	480 nm, 633 nm, 780 nm, 820 nm, 980 nm, 1064 nm, 1260 ~ 1650 nm
Extinction Ratio	> 40 dB
Operating Temperature	-40 ~ 85 °C
Storage Temperature	-40 ~ 85 °C
Dimensions	1.00" × 1.09" × 3.00" (W × H × L) (PLC-003) 0.50" × 0.84" × 3.00" (W × H × L) (PLC-006)

Note: Values are referenced without connectors

Features:

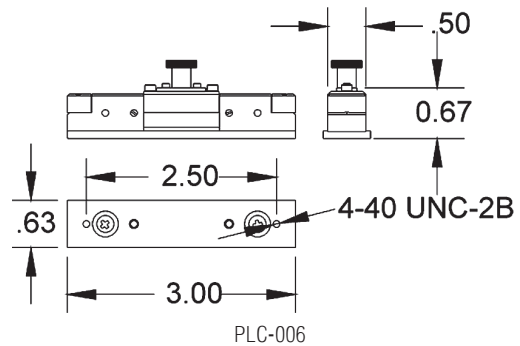
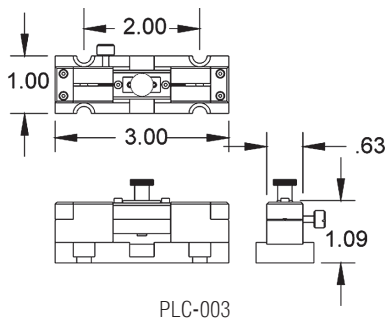
- Low Loss
- Low backreflection
- Compact
- Easy to connect
- Low cost
- Insensitive to wavelength variations
- Works with fibers of any size

Applications:

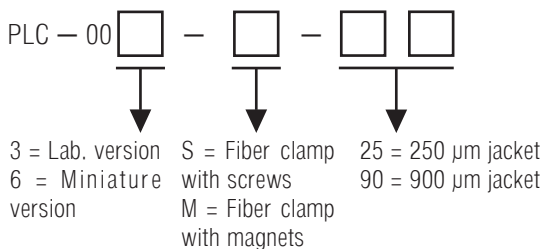
- High speed telecommunication systems
- WDM systems
- CATV systems
- Fiber laser
- Fiber sensor systems
- PM fiber systems
- Antenna remoting systems

Tech Info: pp. 93, 152
App note: p. 125

Dimensions:



Ordering Information:



See page 50 for fully connectorized polarization controller, page 48 for pigtailed polarization controller

Notes:
PLC-006 has no 900 μm jacket option
Magnet clamp available only for 250μm fiber