

Coarse Wavelength Division Multiplexer – CWDM mux or demux, 8 channels, multi mode

Features

- Device works as a multiplexer, demultiplexer or in a bidirectional single fiber link
- Multiplexer and Demultiplexer paired for lowest link loss
- Multi mode fiber GI 62.5 or GI 50
- Micro-hybrid design in a sealed metal housing
- Epoxy free optical path
- RoHS compliant per EU Directive 2002/95EC
- UL 94 V0 flammability rating
- Tested in accordance with Telcordia GR-1209/1221, uncontrolled environment
- Fit for outside plant deployment

Applications

- Combines / separates 8 channels with a 20 nm spacing
- Metro Core, Metro Access, Metro Enterprise, Cable TV, 3G Telephony (UMTS), Datacomm, WAN, RFTS, Sensor Applications
- Analog and digital transmission systems

Specifications

Parameters	Coarse Wavelength Division Multiplexer – mux/demux	
Channels	8	
Center Wavelength [nm]	8 out of 10 adjacent channels	
Band 1 (red band)	1471 / 1491 / 1511 / 1531 / 1551 / 1571 / 1591 / 1611	
Band 2 (blue band)	1271 / 1291 / 1311 / 1331 / 1351 / 1371 / 1391 / 1411 / 1431 / 1451	
	other wavelength upon request; please contact CUBO	
Optical Bandwidth	> 13 nm (higher bandwidth on request)	
Insertion Loss *	Standard < 3.2 dB	
Link Loss * for mux – demux pair	Standard > 4.9 dB	
Isolation **	adjacent channel	> 30 dB
	non-adjacent channel	> 40 dB
	Isolation Spectral Range Band 1 (red)	1460-1620 nm
	Isolation Spectral Range Band 2 (blue)	1260-1460 nm
Return Loss *	> 10 dB	
Directivity (for mux)	> 40 dB	
Max. optical power	250 mW	
Operating Temperature	0°C to 70°C (-40°C to 85°C on request)	
Storage Temperature	-40°C to 85°C (when removed from plastic package)	
Package Dimensions	19 x 15.5 x 9 mm ³	

* With passband, valid over full temperature range and at all states of polarization but without connector losses.

** Valid over full temperature range and at all wavelengths across the channel.



光貿易株式会社

〒113-0034 東京都文京区湯島3-13-8湯島不二ビル301

TEL:03-3832-3117 FAX:03-3832-3118

Email: t.ito@hikari-trading.com

Coarse Wavelength Division Multiplexer – CWDM mux or demux, 8 channels, multi mode

Ordering Information

Please select an option from each configuration table and write the corresponding codes in the applicable boxes to create the part number.

Ordering example: **C-80-M-B-S-S-12-3-B-15**

C - - - - - - - - 1 2 - - -

no. of channels	code	mux or demux code	grade	code
8	80	mux	Standard	S
9	90*	demux	Premium	P*

Fiber length	code	Connector in/out	code
0.5 m	A	none	0
1.0 m	B	SC/PC	1
0.3 m	T	FC/PC	2
0.35 m	U	SC/APC**	3
0.4 m	V	FC/APC**	4
		LC/PC	5
		MU/PC	6
		E2000	7
		E2000/HRL**	8
		ST/PC	9

housing	code	fiber type an packaging	code
Standard 8 channel	S	Corning SMF-28™ (9,125,250 µm) 900 µm loose tube	1*
		Corning SMF-28™ (9,125,250 µm) 250 µm coating	2*
		Multi mode fiber GI (50,125,250 µm) 900 µm loose tube	3
		Multi mode fiber GI (50,125,250 µm) 250µm coating	4
		Multi mode fiber GI (62.5,125,250 µm) 900µm loose tube	5
		Multi mode fiber GI (62.5,125,250 µm) 250µm coating	6

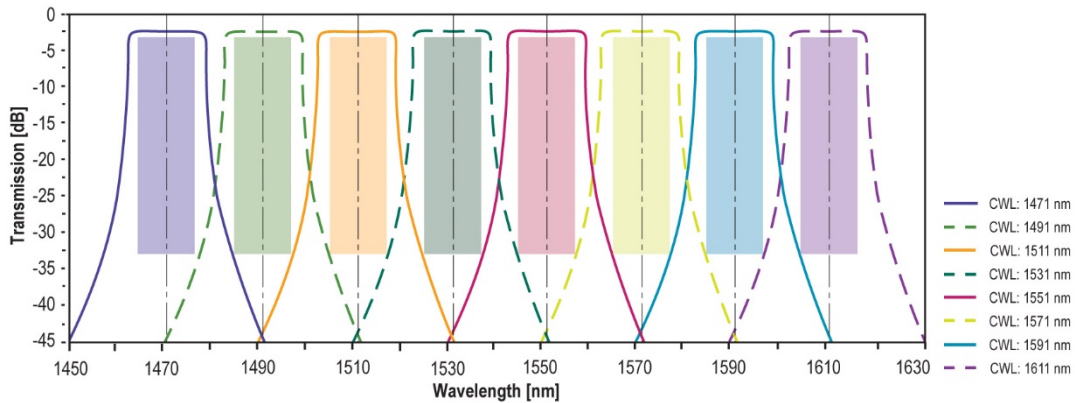
Center wavelengths [nm]	code
1271 / 1291 / 1311 / 1331 / 1351 / 1371 / _ / 1431 / 1451	A
1471 / 1491 / 1511 / 1531 / 1551 / 1571 / 1591 / 1611	B
1271 / 1291 / 1311 / 1331 / 1351 / 1371 / 1391 / 1411	C
1271 / 1291 / 1311 / 1331 / 1351 / 1371 / _ / 1411 / 1431	D

* Configuration is not reflected by this datasheet.

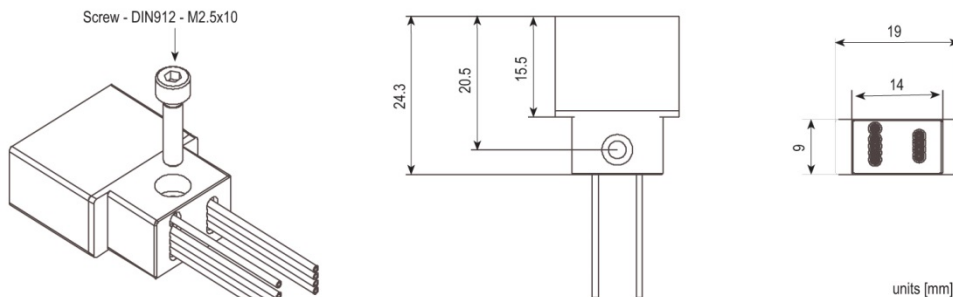
in/out put if the device is regarded as demultiplexer connectors only available in combination with loose tube fiber protection
** 8° angular polishing

Further configuration on request!

Spectral Performance



Standard 8 channel housing



HUBER+SUHNER Cube Optics AG
Eindhoven-Allee 3
55129 Mainz
Germany

phone: +49-6131-4995-100
sales.cubo@hubersuhner.com

www.hubersuhner.com
www.cubeoptics.com