

Coarse Wavelength Division Multiplexer – CWDM add & drop, 2 channels

Features

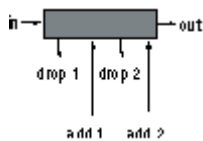
- Device functions as add and drop unit for two CWDM channels
- Micro-hybrid design in a sealed metal housing
- Epoxy-free optical path
- RoHS compliant per EU Directive 2002/95/EC
- Tested in accordance with Telcordia GR-1209/1221, central office

Applications

- Metro Core, Metro Access, Metro Enterprise, Cable TV, 3G Telephony (UMTS), Datacomm, WAN, RFTS
- Analog and digital transmission systems

Specifications

Parameters	Coarse Wavelength Division Multiplexer – add & drop (all values refer to single mode)			
Channels	2 add & 2 drop channel			
Center Wavelength [nm]	choice of 2 wavelength within <u>one</u> band			
Band 1 (red band)	1471 / 1491 / 1511 / 1531 / 1551 / 1571 / 1591 / 1611			
Band 2 (blue band)	1271 / 1291 / 1311 / 1331 / 1351 / 1371 / 1391 / 1411 / 1431 / 1451			
	other wavelength upon request; please contact CUBO			
Optical Bandwidth	> 13 nm			
Insertion Loss ¹	in -> out	< 1.7 dB		
	in -> drop, add -> out	< 1.9 dB		
Isolation	adjacent channel at drop port ²	> 30 dB	> 60 dB	
	non-adj. channel at drop port ²	> 40 dB	> 60 dB	high isolation version
	add channel at drop port ²	> 50 dB	> 60 dB	standard version
	drop channel at out port ²	> 27 dB	> 27 dB	standard version
	Isolation Spectral Range Band 1 (red)	1460-1620 nm		
	Isolation Spectral Range Band 2 (blue)	1260-1460 nm		
Return Loss ¹	> 45 dB (50 dB typ.)			
Directivity	> 50 dB			
Polarization Dependent Loss	< 0.2 dB			
Max. optical power	250 mW			
Operating Temperature	0°C to 70°C (-40°C to 85°C on request)			
Storage Temperature	-40°C to 85°C (when removed from plastic package)			
Package Dimensions	19 x 15.5 x 9 mm ³			



光貿易株式会社

〒113-0034 東京都文京区湯島3-13-8湯島不二ビル301

TEL:03-3832-3117 FAX:03-3832-3118

Email: t.ito@hikari-trading.com

¹ Within passband, valid over full temperature range and at all states of polarization but without connector losses.

² Only valid within Isolation Spectral Range

Coarse Wavelength Division Multiplexer – CWDM add & drop, 2 channels

Ordering Information

Please select an option from each configuration table and write the corresponding codes in the applicable boxes to create the part number.

Ordering example: CA-2-C-D-0-S-02-2-B-15

CA - - - - - - 0 2 - - -

no. of channels	code
2 add & drop	2

optional features	code
None	0
High isolation	H

Fiber length	code	Connector in/out	code
0,5 m	A	none	0
1 m	B	SC/PC	1
0,3 m	T	FC/PC	2
0,35 m	U	SC/APC**	3
0,4 m	V	FC/APC**	4
		LC/PC	5
		MU/PC	6
		E2000	7
		E2000/HRL**	8
		ST/PC	9

Center wavelength of add & drop channel	code	Center wavelength of add & drop channel	code
1611 nm	A	1611 nm	A
1591 nm	B	1591 nm	B
1571 nm	C	1571 nm	C
1551 nm	D	1551 nm	D
1531 nm	E	1531 nm	E
1511 nm	F	1511 nm	F
1491 nm	G	1491 nm	G
1471 nm	H	1471 nm	H
1451 nm	I	1451 nm	I
1431 nm	J	1431 nm	J
1411 nm	K	1411 nm	K
1391 nm	L	1391 nm	L
1371 nm	M	1371 nm	M
1351 nm	N	1351 nm	N
1331 nm	O	1331 nm	O
1311 nm	P	1311 nm	P
1291 nm	Q	1291 nm	Q
1271 nm	R	1271 nm	R

housing	code
Standard add & drop	S

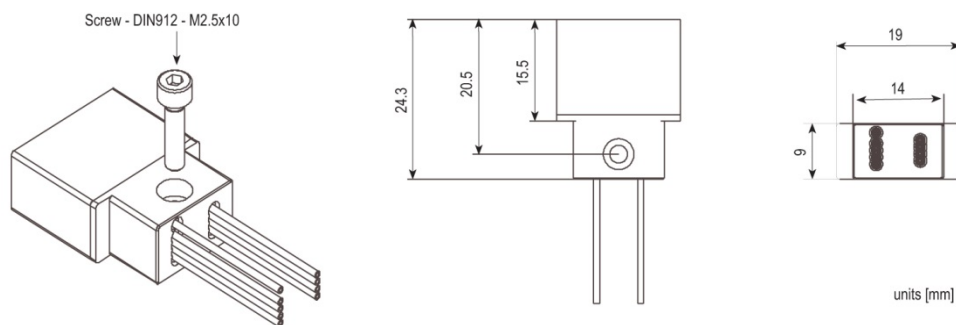
fiber type an packaging	code
Corning SMF-28™ (9,125,250 μm) 900 μm loose tube	1
Corning SMF-28™ (9,125,250 μm) 250 μm coating	2
Multi mode fiber GI (50,125,250 μm) 900 μm loose tube	3*
Multi mode fiber GI (50,125,250 μm) 250μm coating	4*

in/out put if the device is regarded as demultiplexer connectors only available in combination with loose tube fiber protection
** 8° angular polishing

* Configuration is not reflected by this datasheet.

Further configuration on request!

Standard Add & Drop housing



HUBER+SUHNER Cube Optics AG
Eindhoven-Allee 3
55129 Mainz, Germany

+49-6131-4995-100
sales.cubo@hubersuhner.com

www.hubersuhner.com
www.cubeoptics.com