

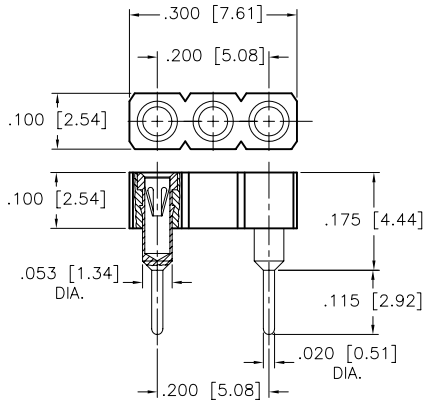
# FUSE SOCKETS

ISO 9001:2000  
CERTIFIED

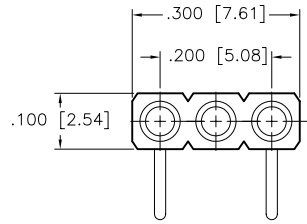


**LEAD FREE AVAILABLE**

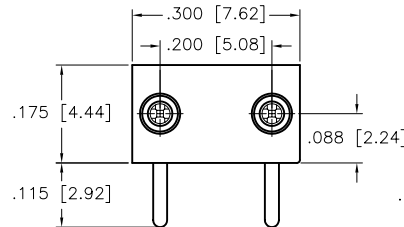
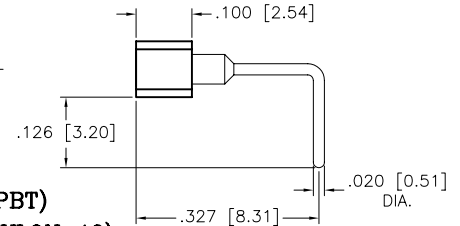
TIN-LEAD AND LEAD FREE  
QUICK AND EASY FUSE REPLACEMENT  
WITHOUT POST SOLDERING / DESOLDERING



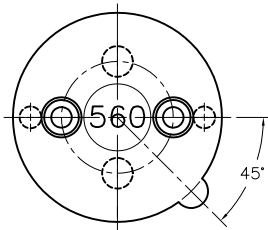
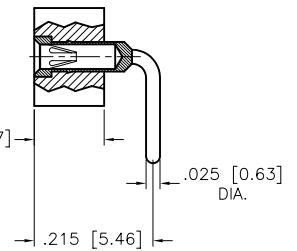
**303-00556-01S-P29-S10 (NYLON 46)  
(THRU HOLE)  
UL LISTED FILE NO. E208521**



**303-00556-366H-P31-B10 (PBT)  
(RIGHT ANGLE) -S10 (NYLON 46)**

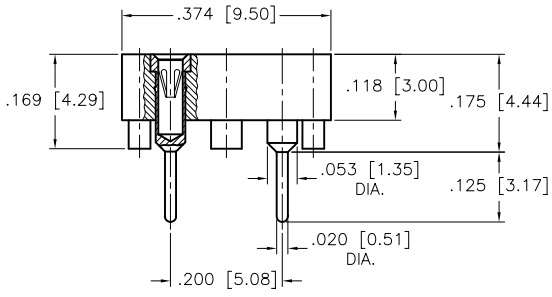


**302-00580-346S-P31-S10 (NYLON 46)  
(RIGHT ANGLE)**

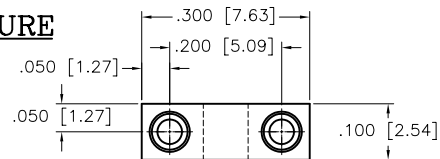


**560-02-229S-P31-S18 (NYLON 46)  
(THRU HOLE)  
UL LISTED FILE NO. E208521**

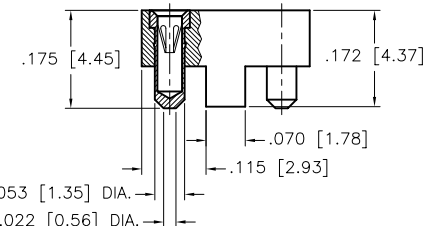
**HIGH TEMPERATURE  
NYLON 46**



**560-02-93S-P31-S18 (NYLON 46)  
(SURFACE MOUNT)  
UL LISTED FILE NO. E208521**



**302-00567-93S-P31-S10 (NYLON 46)  
(SURFACE MOUNT)  
UL LISTED FILE NO. E208521**



**TECHNICAL SPECIFICATIONS**

**MATERIAL**

INSULATOR: B10: PBT GLASS FILLED, UL 94V-0  
S10 AND S18: HIGH TEMP. NYLON 46  
GLASS FILLED, UL 94V-0

TERMINAL: BRASS, TIN-LEAD PLATED } P31 AND P29 = TIN-LEAD PLATING

CONTACT: BeCu, GOLD PLATED } R31 = LEAD FREE PLATING

\* OTHER PLATINGS AVAILABLE